

Irene School of  
*Garden Design*

**COMPREHENSIVE**

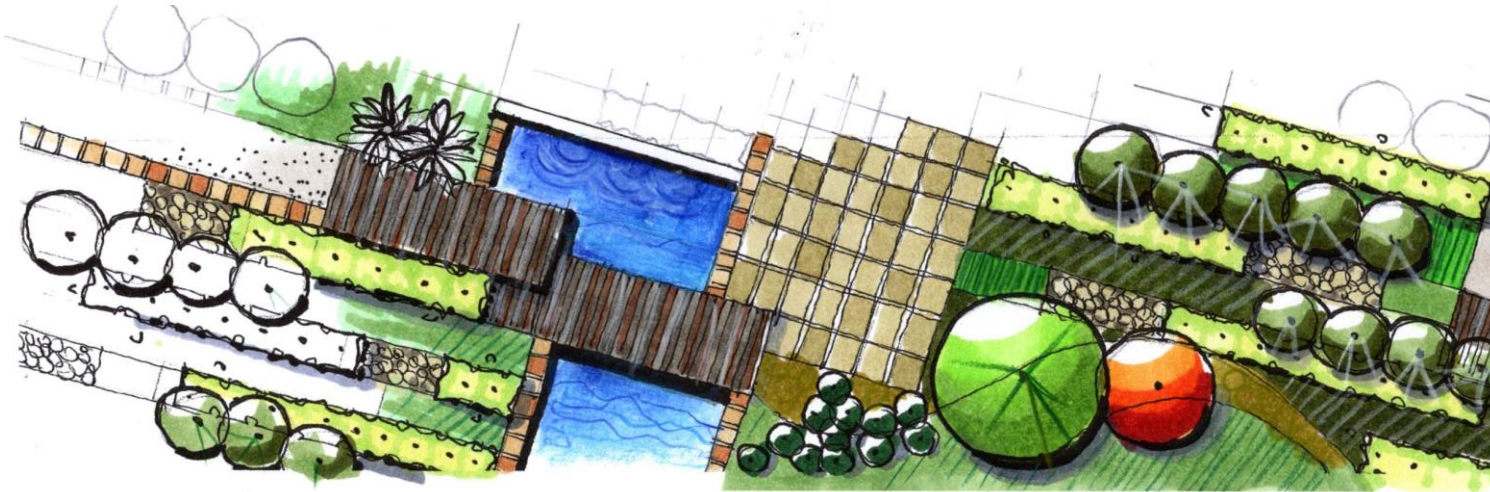
*garden design*

**Course**

# Educate with Passion!

## EMPOWER WITH KNOWLEDGE...

You can have the career you always dreamt of and develop your love of design and gardening into the most rewarding experience. To be a landscape designer, being able to design gardens for others, work outside with living materials and orchestrate worlds for others to live in, is truly one of the most satisfying and fulfilling careers or interests there is. If this passion is what drives you, our Comprehensive Courses will be your most valuable asset. At Irene School of Garden Design we do not want you to miss out on any opportunity to be who you were meant to be. If you have always yearned to design, work with nature and people, love drawing decorating or putting things together, and inspire to a career that allows freedom, creativity, more time and purpose, then you are in safe hands now. Irene School of Garden Design offers morning courses for those who can study during the day and who are embarking on a career or investing in their hobby. Irene School of Garden Design also offer evening courses specifically for those who want to pursue garden design as a new career, paying hobby or serious enthusiast, but need to do so after hours. It is the career you will never retire from, and our comprehensive courses will help you get there.



## OUR FUNDAMENTAL PHILOSOPHY IS DESIGNING GARDENS FOR LIFE...

The leading landscape designers in South Africa, International Universities and companies recommend us because we continually examine not only what we teach but also how we teach. Smaller groups and a personal approach to each student helps us to present our courses in an enjoyable, friendly, and dynamic manner that suits everyone, regardless of your language preference, age, or level of experience. We offer the only landscape design course that develops design and construction skills through creative conceptual thinking, the 20-hour application learning method, and a variety of study approaches that match the 5 learner types. Irene School of Garden Design is independent, which allows us to be current, quality driven and personal, and are not bound by typical constraints of tertiary education such as points, credits, or disruptions in learning. Course material is presented by the most unsurpassed industry individuals together with Lee Burger, holding BSc Larch (UP), BL Hons (UP) and ML Prof (UP) degrees in Landscape Architecture. We believe in our philosophy: Designing gardens for life, and that is why we aspire to be the best in giving students what they need in as an effective way possible to embark on their journey, their new life...

## 1-YEAR COURSE

The Comprehensive course consists of two focus areas and added benefits...

### DESIGN OF OUTDOOR SPACES

### THECNICAL ASPECTS OF OUTDOOR SPACES

## R 32 749

Various payment options available

### CLASS ATTENDING:

Morning classes  
or  
Evening classes



# For the serious garden designer... ONE YEAR MORNING OR EVENING COURSES...

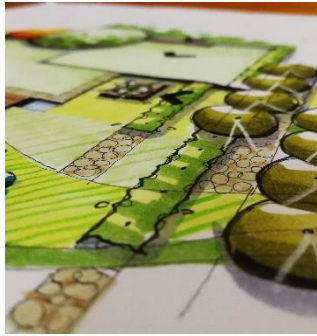
Our 1-year comprehensive courses are sorted into six theoretical subjects, and various practical components. Students can address each core competency as a course for leisure or purpose. Each subject is offered as a complete series with unique assignments relating to each subject. Once all subjects are completed students can achieve a credential of achievement or excellence. Morning students can start in February, and will have class on Tuesday mornings, or can start in September and will have classes on Monday mornings during private school terms. Evening students can start in February each year and will have classes on Tuesday evenings or September and will have classes on Wednesday evenings, during private school terms. Whether it is for pleasure or to become a designer of outdoor spaces, you now have courses that comfortably fits into your busy schedule and becomes a credential in garden design.

## Design segment

**FOCUSSED ON DESIGNING PLANNING AND DRAWING OF OUTDOOR SPACES.**



**DESIGN PROCESS, CONCEPT, AND CLIENT INTERVIEW**



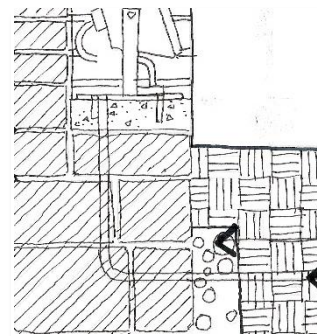
**SPATIAL DESIGN AND GARDEN DECORATING**



**DRAWING, DRAFTING AND PRESENTATION**

## Technical segment

**FOCUSSED ON PROVIDING A SOLID TECHNICAL BACKGROUND TO BUILD ON WITH EXPERIENCE**



**TECHNICAL DRAWING AND SITE PROCESS**



**CONSTRUCTION PRIMER AND MATERIALS**



**PLANTING, INTRO TO HORTICULTURE AND COSTING**

The Design segment focuses on all the essential skills and knowledge needed to be a well-rounded designer of outdoor spaces. This course was inspired by our most frequent requests from potential clients. The need for a garden designer that can assist with smaller parts of a garden, or garden consultations rather than a re-design of the entire garden. This design course, unique to Irene School of Garden Design will equip students with the skill and background to meet this identified deficiency in the gardening sector.

**ADDED BENEFITS INCLUDE:** A 3-day introduction to Computer Aided Design (CAD), individualised assistance when engaging in projects and assignments, group discussions, creative mornings, possible practical opportunities and Outings.

Upon successful completion of your course, assignments and design projects, you might be eligible with our recommendation to register as an individual with the guild of garden design for Southern Africa or register an installation practice with other the various other industry bodies depending on your interests and experience.

The technical segment focuses on all the essential skills and knowledge associated with planting, installing and quantification of outdoor spaces. The idea behind this course was to assist designers and homeowners with skilled people that can meet the demand for gardening help with the smaller things, such as revamps, small features the installation of sections rather than entire gardens, sourcing of products and plants, and working out how many and how much.

**REGISTER**  
TO THE GUILD OF  
LANDSCAPE DESIGNERS



OUTLINE FOR THE

*Design*

*components*

OF THE

**COMPREHENSIVE**

**Course**

# Design subject fields

## UNPACKING WHAT'S IN THE DESIGN SECTION...

The design course section addresses a variety of interesting and essential topics or courses that will aid and develop designers from a variety of backgrounds. Design is a crucial part of life. Almost everything we experience or have contact with has some form of design relating to it. The courses in this category have been carefully compiled to teach students the fundamentals that cannot be self-taught. It includes content exclusive to Irene School of Garden Design.

### SPATIAL DESIGN:

Architectural Spatial Design is essential to the design of any kind of space, even virtual spaces. The form space order and circulation principles are the tools that the designer needs in order to lay out or set out good, working spaces. Contrary to spatial decoration or design principles generally taught, it is particularly difficult to obtain this skill through only books and theory. This core component of design is the pivoting point in most designers' creative careers and gives designers an advantage in the understanding of architecture and space. Unique to Irene School of Garden Design, the course looks at the various philosophies and how to implement them.

### SPATIAL HISTORY:

An understanding of history will inspire designers to explore styles as inspiration. It broadens the frame of reference designers have at their disposal and is an insightful way of learning about the milieu we live in today. The history courses draw interesting parallels between various categories of design.

#### HISTORY PART 1 & 2:

From Antiquity to the Renaissance

#### HISTORY PART 3 & 4:

The Renaissance, Baroque and English/Asian garden movement

#### HISTORY PART 5 & 6:

20th Century to present day

### LIGHTING:

Outdoor Lighting is an exciting theme that explores the layering and design of artificial lighting schemes focussed on gardens, but which is also very much applicable to Interior Design. The course explores different luminaires and light sources as well as material on how to design with natural light. This course theme will not only optimise a lighting environment's mood, but also assist in conserving energy, improving quality and getting the most out of such an investment.

### DESIGN PROCESS AND CLIENT INTERVIEW:

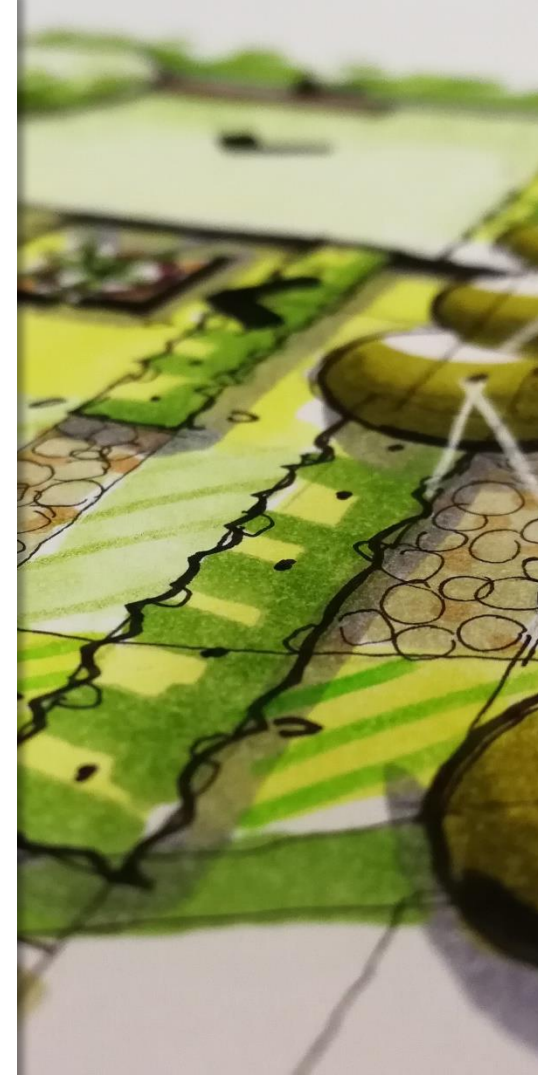
This course theme sets the tone for working systematically and categorises the various phases of a project into process. An in depth look at client interviews and project cycles aid students in working efficiently and purpose driven.

### CONCEPT FORMULATION:

Concept exploration is probably one of the most crucial parts in any design. Often completely misunderstood and described as the idea, the concept and its formulation are explored in depth with this study theme. This course is philosophical in nature and appeals to a variety of design related careers. Concept formulation is an essential phase of a complete design process, without which the quality of a design outcome is questionable. Insightful and applicable to a diverse myriad of careers this course theme cements the essence of a project, enriches the process, and appropriately adjudicates a design outcome.

### ANALYSING PROPERTIES AND HOMES:

Insight into what sets up a guideline for design of properties is crucial if mistakes are to be avoided. This study theme theoretically and practically looks at how to accurately analyse homes and gardens to set up a guideline according to which the rest of the project should test or run. This is a particularly helpful course component for new and prospective homeowners. Implementing the knowledge from this course theme could assist in better time management of projects, result in less waste, potentially save money and avoid unfitting and hasty decision making during the implementation and design phases of a project.



# Drawing & Drafting

## COMMUNICATING BRILLIANT IDEAS VISUALLY...

Designers communicate visually. Drawing drafting and presentation skills are extremely important in order to achieve success. These are also central to a variety of other professions and would make a great accompaniment to most occupations. The drawing course themes take on an enjoyable format with live demonstrations drawn and rendered in class, visual critique of various examples, in class exercises and students can hone their skills even more by perfecting the assignments designed to practice until perfect. Drawing is firstly a skill, then a talent. Almost anyone can draw well with the right guidance and exercise.

### FREEHAND AND 3D DRAWING:

We venture into art and learn how to draw skilfully with a series of exercises designed to improve your drawing skill, no matter what your level of experience is. This course reconnoitres the three-dimensional drawing realm. The course explains the principles of axonometric drawing, one point perspective and 2-point perspective sketching in a brief introduction of each followed by an in-class example. This course section is an enjoyable take on a difficult model of drawing and will enhance even the artist's skills.

### PLANS AND RENDERING:

This course theme explores the drawing methods, and layout of with reference to landscape or garden plans. A practical in-class example builds confidence and easy to use step by step notes and examples will build the base from which students can develop their skills.

### ARCHITECTURAL DRAFTING:

We offer an introduction to technical drawing skills and the use of drawing instruments. We introduce students to scale and the various line qualities and denotations. The course component shows some of the basic skills in setting up, hints and tips for working fast and efficiently and hosts a small practical in-class examples.

### ELEVATIONS AND RENDERING:

Explore the exciting design and drawing skills associated with elevations. The course starts with easy examples of the principles in elevation drawing, then progresses to more elaborate rendering and shading examples and insightful in-class exercises.

### PRESENTATION COURSE:

This course takes an insightful look at graphic design and presentation. The skills of presentation can be used in almost any career path. This course section includes introduction to PowerPoint as a tool for presenting as well as compiling layouts and poster boards in the form of assignments and class presentation of your work. We focus on conducting design consultations with an emphasis on the presentation order and students need to be somewhat computer literate for this course section and need their own laptop to experiment on for the last quarter of the class.

# Planting Design

### INTRODUCTION TO PLANTING DESIGN AND GARDEN STYLES:

The planting design section of the course explores the décor principles of planting design. This course will contribute to a garden plant search criteria that will make choosing the correct plant for a particular theme, style and climate easy. This course is often enjoyed by the enthusiast due to the greater understanding of a planting scheme that not only looks good, but also contributes to the environment. (The implementation course will revisit the design section before continuing with the more technical aspects of planting. In the design course the focus is on decorating beds with plants)





OUTLINE FOR THE  
*Technical  
components*  
OF THE  
**COMPREHENSIVE**  
Course

# Technical subject field

## UNPACKING WHAT'S IN THE TECHNICAL SECTION...

The technical course section is an exciting, layered category of courses that set out to please the curiosity of those who would like to implement landscapes. Each section theoretically deals with important aspects of how to implement garden designs. The course takes an in depth look at important topics like planting, ecology, sustainability, soils and quantification, before continuing into a primer of construction related items providing a good basis for students to continue their passion for implementation into a specific field.

## Planting

Preparing the soil for planting is the first and most important step of garden success. The planting category will take students through the very crucial first steps all the way to designing with plants and determining the correct quantities. With a detailed planting scheme and planting plan gardening is easy, fun and affordable. We do revise the basics of planting design, but this section deals with technical

### SITE MEASURING & DUMPY LEVEL:

This course module takes a brief look at the 3 basic methods of site measuring. Measure twice, work once. It is necessary to measure with accuracy and efficiency to create the required base drawings to design on. The site measuring theme assists students in accurately measuring sites and height differences to convert information onto paper. The site measuring theme also introduces scale and documenting measurements from a site onto plan. Practical exercises teach students to determine height differences and slope by

### PLANTING PLANS AND QUANTITIES:

Planting plans and quantities are crucial for a successful installation. It helps minimise losses and cost, enhances longevity of plants, and helps avoid unnecessary trips to the nursery. Most people visit their nearest garden centre and buy plants without planning or knowing what they are purchasing. This course will make the whole process of ordering and planning with plants more accurate, efficient and hassle free.

### PLANTING ROLES AND METHODS:

The topic explores the role that plants play in the landscape along with a revision of principles of planting design. This course will contribute to a garden plant search criteria that will make choosing the correct plant for a particular theme, style and climate easy. This course is often enjoyed by the enthusiast due to the greater understanding of a planting scheme that not only looks good, but also contributes to the environment.

### SITE PREP, SOILS AND PLANTING METHODS:

This section discusses the soil improvements, the soil preparation, planting methods and the philosophies behind organic soil care. It is a necessary course for both the designer as well as the leisure gardener. The preparation is equally as important to a successful garden as what the design and installation is. Failing to prepare is preparing to fail. Soils and improvements are the garden's most valuable asset yet it's the most neglected aspect.

### INTRODUCTION TO BOTANY:

Understanding what books tell us. This section provides a brief introduction to the terminology of botany as well as the different roles plants play in the landscape. It helps the gardener understand not only how plants fit into a landscape but also how plants work and what they can do in the landscape. The terminology is also discussed with the parameters for selecting and identifying plants.





# Construction primer

The construction primer section of the technical course will give students a valuable theoretical basis from which they can build their knowledge of the fundamental topics relating to garden construction. This section will introduce students to thinking of design in terms of its construction and the process of constructing a garden or landscape. We take a more in depth look at some of the most important topics like the costing and Bills of Quantities. This section will be thoroughly enjoyed by the hands-on student, the avid DIY enthusiast and the quantitative thinkers.

## INSTALLATION CHRONOLOGY AND PROCESSES

We put the site works in order by looking at the various steps or installation processes on site and learn more about extent of works reporting.

## SUSTAINABILITY:

Sustainability is a crucial component of construction and maintenance. This theme deals with the terminology and application of environmentally sound construction methods, as well as how to determine site health.

## INTRODUCTION TO IRRIGATION:

This theme of the Construction primer covers different systems, the planning and the components of an irrigation system. The introduction to irrigation covers measures to improve maintenance and the correct installation of various irrigation systems.

## KEY QUESTIONS TO SUCCESSFUL CONSTRUCTION PROBLEM SOLVING:

We found that to be successful in construction, it is of paramount importance to be inquisitive. This theme covers questions a designer should ask, and discuss some solutions regarding pathways, water features, ponds, decking and brickwork amongst others.

## CONSTRUCTION DRAWING:

Drawing sections and details are the keystones to understanding construction. It is essential to communicate not only the detail of construction but also the process of construction by means of drawings. This theme covers the conventions associated with annotation and construction drawing.

## INTRODUCTION TO MATERIALS:

This theme is an insightful self-study theme of the processes and different materials used in construction. The theme covers concrete, wood, glass metals and plastics.

## COSTING AND SPECIFICATION:

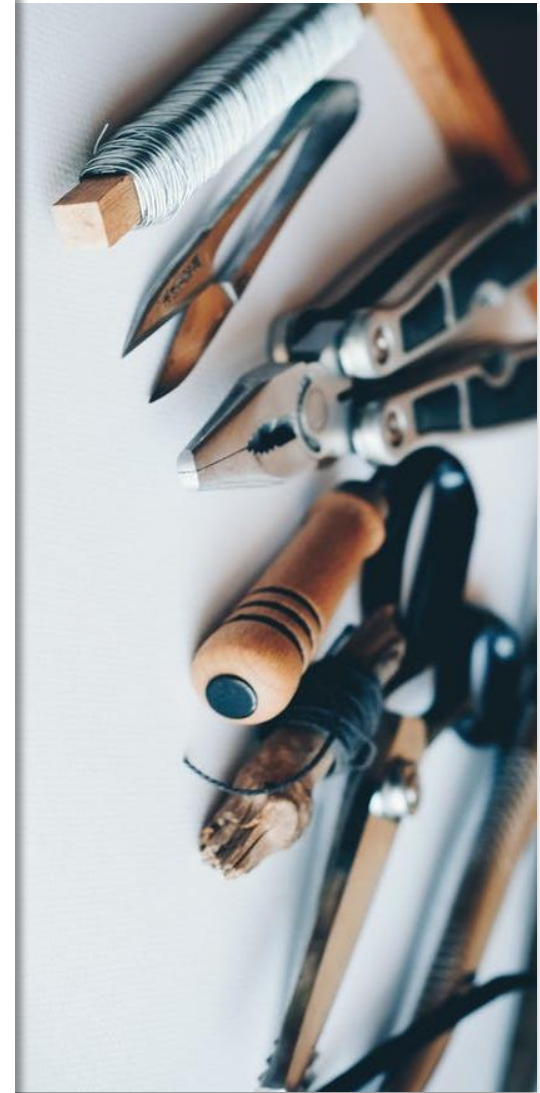
The crux of any project revolves around quantifying a project correctly. This section deals with the documentation and industry norms of costing in an example-based class. The course looks at how the professional landscape architecture realises costs and documents a project for tender. Accuracy in costing is the most crucial skill for installers and designers.

## WATER FEATURES:

Water features are most likely the biggest consideration for most gardeners. It is important to be informed about the various aspects relating to water features in order to make sound design and maintenance decisions. This course discusses the important considerations of water features as well as swimming pools. We take a closer look at the reticulation systems and discharges available and introduce students to the construction considerations of water elements. This course theme is particularly supportive to students and homeowners considering an outdoor water feature or swimming pool.

## 3-DAY INTRODUCTION TO CAD WORKSHOP

We take a look at Computer aided design, teach the program basics, and draw a plan with the best program to use for landscape design used worldwide: AutoCAD. Students practice with the trial and can then decide to buy/rent AutoCAD or AutoCAD lite from the Autodesk supplier. This is a value-added extra item, only available to our comprehensive course students. The program and introduction training are not included or part of the course. Students must have their own laptop computer and are responsible for their own installation before the workshop starts.



# Payment options:

Our comprehensive course is priced with your budget in mind. It is a very cost-effective way to study or invest in your new career or paying hobby and allows students the freedom to continue working while studying or commit to their passion in a more involved manner. Our aim is to provide exceeding personal and career related value at an affordable price in the shortest timeframe possible. Irene School of Garden Design accommodates smaller groups to ensure the quality we are renowned for, and to give students personal attention. The course is the culmination of more than 21 years of experience and continuous industry monitoring to produce the most well-rounded Garden Designers there is, and we have had students come to attend our course from all over the world. Our courses can be paid for up front, with the easy 3 payment plan or with the 10-month payment plan, both including a small admin fee.

## UPFRONT R32 749

Deposit: R5749.00

**THEREAFTER A SINGLE PAYMENT:**  
R27000.00 via eft, Visa or MasterCard  
Before the end of the first month of study

## EASY 3 PAYMENTS 3 X R11200

Deposit: R11200.00

**THEREAFTER 2 PAYMENTS OF:**  
R11200 via eft, Visa or MasterCard  
(R283.66 admin fee per payment)  
120 days, 240 days after deposit

## 10-MONTH PLAN 10 X R3449

Deposit: R3449.00

**THEREAFTER 9 PAYMENTS OF:**  
R3449.00 via eft, Visa or MasterCard  
(R174.10 admin fee per payment)  
30-day payment intervals/monthly

# Classes days and times:

## CLASS ATTENDING OPTIONS:

### 1-YEAR COMPREHENSIVE COURSE STUDY OPTIONS:

#### Start February:

Classes Tuesday mornings or Tuesday evenings

#### Start July:

Classes Monday mornings or Wednesday evenings

\*(During ISGD school terms)

## ADDITIONAL INFORMATION:

All course notes are provided digitally only. Notes can be viewed from your computer or phone and can be downloaded on your portable drive or device. Students must use their own electronic equipment such as laptops or computers. We have made most of our material digital and provide most handbooks digitally to make our courses as cost effective as possible. Notes may be printed at your own cost. Stationery, travel, data and/or computer programs are not included. The course excludes stationary, but the school can order stationery. Please read our accreditation information section for more information. If a student misses a class due to unforeseen circumstances, the class can be caught up in the corresponding evening or morning time slot or via the distance learning version of the course. Students are awarded with a credential of attendance if no assignments and projects are submitted, a credential of training if all assignments and design projects are submitted or a credential of training and excellence for a distinction. To be eligible to register with the Guild of Landscape Designers of Southern Africa, 75% class attendance is needed, 60% average for assignments and design projects and all subjects need to be completed to successfully obtain a credential in garden design.

Irene School of  
*Garden Design*  
Designing gardens for life...

Est 2001



1 info@gardendesignschool.co.za

2 study@gardendesignschool.co.za

www.gardendesignschool.co.za



+27 12 751 0808

+27 82 322 2252

