



Irene School of
Garden Design

ONLINE

LEARNING

Garden Design

&

Technical

Courses

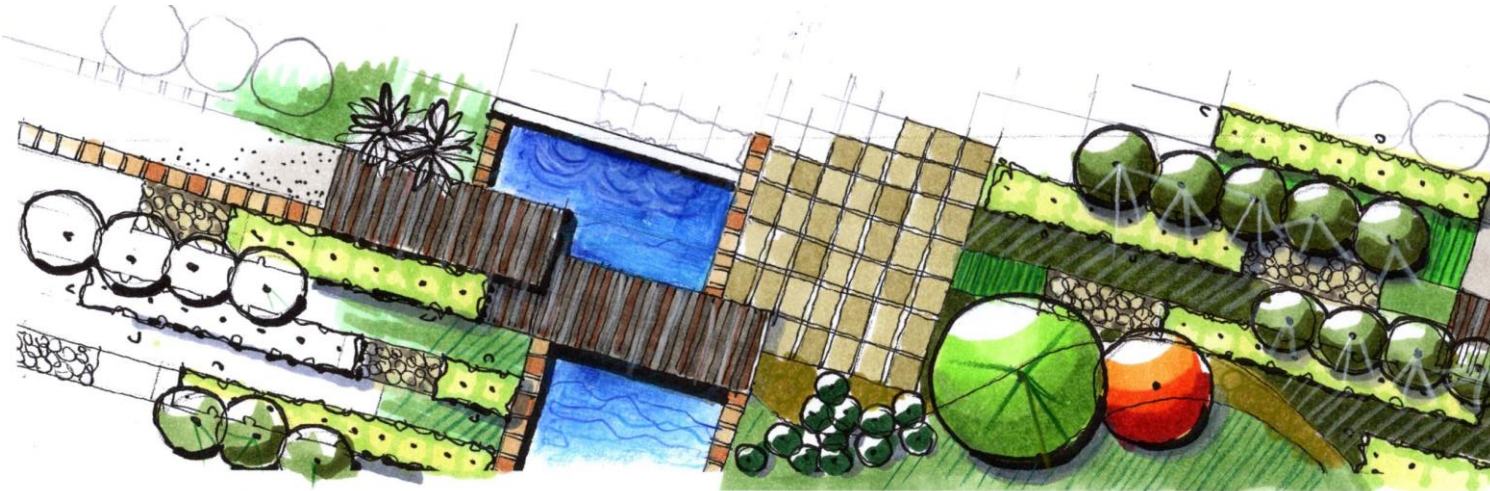


Educate with Passion!

EMPOWER WITH KNOWLEDGE...

Life is about acquiring a multitude of skills and combining them in such a way that you become an expert in what the world will need tomorrow. It is a process and not a recipe. Irene School of Garden Design has developed our 50/50 split online courses to develop your love of design and gardening into the most rewarding experience. The 2 courses also allow students with some background, previous experience, or even different career paths to add what they need to their existing repertoire. Create a new career or paying hobby out of your passion for outdoor spaces.

To be a landscape designer, being able to design gardens for others, work outside with living materials and orchestrate worlds for others to live in, is truly one of the most satisfying and fulfilling careers or interests there is. If you have always yearned to design, work with nature and people, love drawing, decorating, or putting things together, and inspire to a career that allows freedom, creativity, more time and purpose, then one or both of our hobby courses is designed for you. There are morning, evening and distance learning options available to suit your schedule.



OUR FUNDAMENTAL PHILOSOPHY IS DESIGNING GARDENS FOR LIFE...

The leading landscape designers in South Africa, International Universities and companies recommend us because we continually examine not only what we teach but also how we teach. Smaller groups and a personal approach to each student helps us to present our courses in an enjoyable, friendly, and dynamic manner that suits everyone, regardless of your language preference, age, or level of experience. We offer the only landscape design course that develops design and construction skills through creative conceptual thinking, the 20-hour application learning method, and a variety of study approaches that match the 5 learner types. Irene School of Garden Design is independent, which allows us to be current, quality driven and personal, and are not bound by typical constraints of tertiary education such as points, credits, or disruptions in learning. Course material is voice guided followed by application assignment that helps distance learning students apply what they have learnt immediately after each lesson. Material is compiled by professionals together with Lee Burger, holding BSc Larch (UP), BL Hons (UP) and ML Prof (UP) degrees in Landscape Architecture. With our online study courses, students can study from anywhere, anytime We believe in our philosophy: Designing gardens for life, and that is why we aspire to be the best in giving students what they need in as an effective way possible to embark on their journey, their new life...

2 COURSES:

Choose a course that suits your interests or do both to complete your gardening skills...

DESIGN COURSE OF OUTDOOR SPACES

R17 749

Online Learning

Start any time

THECNICAL COURSE OF OUTDOOR SPACES

R17 749

Online Learning

Start any time

Do both courses and receive 10% discount.



For Pleasure or Purpose...

DESIGNING NEW CAREERS AROUND YOUR HOBBIES...

Our 50/50 split online courses focuses on the 2 essential halves from the Comprehensive course individually. Designing outdoor spaces and the technical aspects of outdoor spaces. Each lesson in the course is available with pdf versions, and voice guided notes with beautiful visual and graphic explanations that students can go through wherever, whenever. Each lesson has its very own application homework to implement that lesson's theory, and this all combines into design projects which is then submitted for advice, and feedback. Students can choose to do the courses for leisure or purpose, because each course is offered with a credential of virtual attendance, but students who opt to submit the various design projects can achieve a credential of achievement or excellence. Whether it is for pleasure or to become a designer of outdoor spaces, you now have courses that comfortably fits into your busy schedule and are designed to elevate your gardening passion to the next level, all fitting into your lifestyle, no matter where in the world you are...

Design course OF OUTDOOR SPACES COURSE.



**DESIGN PROCESS,
CONCEPT, AND
CLIENT INTERVIEW**



**SPATIAL DESIGN
AND GARDEN
DECORATING**



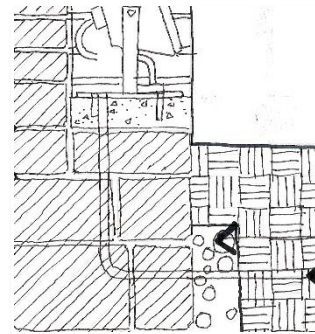
**DRAWING,
DRAFTING AND
PRESENTATION**

The Design course focuses on all the essential skills and knowledge needed to be a well-rounded designer of outdoor spaces. This course was inspired by our most frequent requests from potential clients. The need for a garden designer that can assist with smaller parts of a garden, or garden consultations rather than a re-design of the entire garden. This design course, unique to Irene School of Garden Design will equip students with the skill and background to meet this identified deficiency in the gardening sector.

PEOPLE WHO THIS COURSE IS PERFECT FOR:

This course is designed for anyone, from any background and any age that wants to add garden design to other studies, convert their gardening pastime into a paying hobby, or is already involved in the implementation of garden design, but lacks the design components and background.

Technical course OF OUTDOOR SPACES COURSE.



**TECHNICAL
DRAWING AND
SITE PROCESS**



**CONSTRUCTION
PRIMER AND
MATERIALS**



**PLANTING, INTRO
TO HORTICULTURE
AND COSTING**

The technical course focuses on all the essential skills and knowledge associated with planting, installing and quantification of outdoor spaces. The idea behind this course was to assist designers and homeowners with skilled people that can meet the demand for gardening help with the smaller things, such as revamps, small features the installation of sections rather than entire gardens, sourcing of products and plants, and working out how many and how much.

PEOPLE WHO THIS COURSE IS PERFECT FOR:

This course is perfect for people from any design background that wants to add installation and plant knowledge to other studies, convert their gardening pastime into an installation opportunity, or people who want to learn more about technical and quantitative qualities of projects.

BOTH COURSES COMBINED & WITH THE DESIGN PROJECTS SUBMITTED IS EQUAL TO THE FULL COMPREHENSIVE COURSE.



Design COURSE

A brief look at designing
and representing garden design



Design Course

UNPACKING WHAT'S IN THE DESIGN COURSE...

The design course addresses a variety of interesting and essential topics or courses that will aid and develop designers from a variety of backgrounds. Design is a crucial part of life. Almost everything we experience or have contact with has some form of design relating to it. The courses in this category have been carefully compiled to teach students the fundamentals that cannot be self-taught. It includes content exclusive to Irene School of Garden Design.

SPATIAL DESIGN:

Architectural Spatial Design is essential to the design of any kind of space, even virtual spaces. The form space order and circulation principles are the tools that the designer needs in order to lay out or set out good, working spaces. Contrary to spatial decoration or design principles generally taught, it is particularly difficult to obtain this skill through only books and theory. This core component of design is the pivoting point in most designers' creative careers and gives designers an advantage in the understanding of architecture and space. Unique to Irene School of Garden Design, the course looks at the various philosophies and how to implement them.

SPATIAL HISTORY:

An understanding of history will inspire designers to explore styles as inspiration. It broadens the frame of reference designers have at their disposal and is an insightful way of learning about the milieu we live in today. The history courses draw interesting parallels between various categories of design.

HISTORY PART 1 & 2:

From Antiquity to the Renaissance

HISTORY PART 3 & 4:

The Renaissance, Baroque and English/Asian garden movement

HISTORY PART 5 & 6:

20th Century to present day

LIGHTING:

Outdoor Lighting is an exciting theme that explores the layering and design of artificial lighting schemes focussed on gardens, but which is also very much applicable to Interior Design. The course explores different luminaires and light sources as well as material on how to design with natural light. This course theme will not only optimise a lighting environment's mood, but also assist in conserving energy, improving quality and getting the most out of such an investment.

DESIGN PROCESS AND CLIENT INTERVIEW:

This course theme sets the tone for working systematically and categorises the various phases of a project into process. An in depth look at client interviews and project cycles aid students in working efficiently and purpose driven.

CONCEPT FORMULATION:

Concept exploration is probably one of the most crucial parts in any design. Often completely misunderstood and described as the idea, the concept and its formulation are explored in depth with this study theme. This course is philosophical in nature and appeals to a variety of design related careers. Concept formulation is an essential phase of a complete design process, without which the quality of a design outcome is questionable. Insightful and applicable to a diverse myriad of careers this course theme cements the essence of a project, enriches the process, and appropriately adjudicates a design outcome.

ANALYSING PROPERTIES AND HOMES:

Insight into what sets up a guideline for design of properties is crucial if mistakes are to be avoided. This study theme theoretically and practically looks at how to accurately analyse homes and gardens to set up a guideline according to which the rest of the project should test or run. This is a particularly helpful course component for new and prospective homeowners. Implementing the knowledge from this course theme could assist in better time management of projects, result in less waste, potentially save money and avoid unfitting and hasty decision making during the implementation and design phases of a project.



Drawing & Drafting

COMMUNICATING BRILLIANT IDEAS VISUALLY...

Designers communicate visually. Drawing drafting and presentation skills are extremely important in order to achieve success. These are also central to a variety of other professions and would make a great accompaniment to most occupations. The drawing course themes take on an enjoyable format with live demonstrations drawn and rendered in class, visual critique of various examples, in class exercises and students can hone their skills even more by perfecting the assignments designed to practice until perfect. Drawing is firstly a skill, then a talent. Almost anyone can draw well with the right guidance and exercise.

FREEHAND AND 3D DRAWING:

We venture into art and learn how to draw skilfully with a series of exercises designed to improve your drawing skill, no matter what your level of experience is. This course reconnoitres the three-dimensional drawing realm. The course explains the principles of axonometric drawing, one point perspective and 2-point perspective sketching in a brief introduction of each followed by an in-class example. This course section is an enjoyable take on a difficult model of drawing and will enhance even the artist's skills.

PLANS AND RENDERING:

This course theme explores the drawing methods, and layout of with reference to landscape or garden plans. A practical in-class example builds confidence and easy to use step by step notes and examples will build the base from which students can develop their skills.

ARCHITECTURAL DRAFTING:

We offer an introduction to technical drawing skills and the use of drawing instruments. We introduce students to scale and the various line qualities and denotations. The course component shows some of the basic skills in setting up, hints and tips for working fast and efficiently and hosts a small practical in-class examples.

ELEVATIONS AND RENDERING:

Explore the exciting design and drawing skills associated with elevations. The course starts with easy examples of the principles in elevation drawing, then progresses to more elaborate rendering and shading examples and insightful in-class exercises.

PRESENTATION COURSE:

This course takes an insightful look at graphic design and presentation. The skills of presentation can be used in almost any career path. This course section includes introduction to PowerPoint as a tool for presenting as well as compiling layouts and poster boards in the form of assignments and class presentation of your work. We focus on conducting design consultations with an emphasis on the presentation order and students need to be somewhat computer literate for this course section and need their own laptop to experiment on for the last quarter of the class.

Planting Design

INTRODUCTION TO PLANTING DESIGN AND GARDEN STYLES:

The planting design section of the course explores the décor principles of planting design. This course will contribute to a garden plant search criteria that will make choosing the correct plant for a particular theme, style and climate easy. This course is often enjoyed by the enthusiast due to the greater understanding of a planting scheme that not only looks good, but also contributes to the environment. (The implementation course will revisit the design section before continuing with the more technical aspects of planting. In the design course the focus is on decorating beds with plants)





Technical **COURSE**

A brief look at applied
knowledge of garden design



Technical course

UNPACKING WHAT'S IN THE TECHNICAL COURSE

The technical course is an exciting, layered category of courses that set out to please the curiosity of those who would like to implement landscapes. Each section theoretically deals with important aspects of how to implement garden designs. The course takes an in depth look at important topics like planting, ecology, sustainability, soils and quantification, before continuing into a primer of construction related items providing a good basis for students to continue their passion for implementation into a specific field.

Planting

Preparing the soil for planting is the first and most important step of garden success. The planting category will take students through the very crucial first steps all the way to designing with plants and determining the correct quantities. With a detailed planting scheme and planting plan gardening is easy, fun and affordable. We do revise the basics of planting design, but this section deals with technical

SITE MEASURING & DUMPY LEVEL:

This course module takes a brief look at the 3 basic methods of site measuring. Measure twice, work once. It is necessary to measure with accuracy and efficiency to create the required base drawings to design on. The site measuring theme assists students in accurately measuring sites and height differences to convert information onto paper. The site measuring theme also introduces scale and documenting measurements from a site onto plan. Practical exercises teach students to determine height differences and slope by

PLANTING PLANS AND QUANTITIES:

Planting plans and quantities are crucial for a successful installation. It helps minimise losses and cost, enhances longevity of plants, and helps avoid unnecessary trips to the nursery. Most people visit their nearest garden centre and buy plants without planning or knowing what they are purchasing. This course will make the whole process of ordering and planning with plants more accurate, efficient and hassle free.

PLANTING ROLES AND METHODS:

The topic explores the role that plants play in the landscape along with a revision of principles of planting design. This course will contribute to a garden plant search criteria that will make choosing the correct plant for a particular theme, style and climate easy. This course is often enjoyed by the enthusiast due to the greater understanding of a planting scheme that not only looks good, but also contributes to the environment.

SITE PREP, SOILS AND PLANTING METHODS:

This section discusses the soil improvements, the soil preparation, planting methods and the philosophies behind organic soil care. It is a necessary course for both the designer as well as the leisure gardener. The preparation is equally as important to a successful garden as what the design and installation is. Failing to prepare is preparing to fail. Soils and improvements are the garden's most valuable asset yet it's the most neglected aspect.

INTRODUCTION TO BOTANY:

Understanding what books tell us. This section provides a brief introduction to the terminology of botany as well as the different roles plants play in the landscape. It helps the gardener understand not only how plants fit into a landscape but also how plants work and what they can do in the landscape. The terminology is also discussed with the parameters for selecting and identifying plants.



Construction primer

The construction primer section of the technical course will give students a valuable theoretical basis from which they can build their knowledge of the fundamental topics relating to garden construction. This section will introduce students to thinking of design in terms of its construction and the process of constructing a garden or landscape. We take a more in depth look at some of the most important topics like the costing and Bills of Quantities. This section will be thoroughly enjoyed by the hands-on student, the avid DIY enthusiast and the quantitative thinkers.

INSTALLATION CHRONOLOGY AND PROCESSES

We put the site works in order by looking at the various steps or installation processes on site and learn more about extent of works reporting.

SUSTAINABILITY:

Sustainability is a crucial component of construction and maintenance. This theme deals with the terminology and application of environmentally sound construction methods, as well as how to determine site health.

INTRODUCTION TO IRRIGATION:

This theme of the Construction primer covers different systems, the planning and the components of an irrigation system. The introduction to irrigation covers measures to improve maintenance and the correct installation of various irrigation systems.

KEY QUESTIONS TO SUCCESSFUL CONSTRUCTION PROBLEM SOLVING:

We found that to be successful in construction, it is of paramount importance to be inquisitive. This theme covers questions a designer should ask, and discuss some solutions regarding pathways, water features, ponds, decking and brickwork amongst others.

CONSTRUCTION DRAWING:

Drawing sections and details are the keystones to understanding construction. It is essential to communicate not only the detail of construction but also the process of construction by means of drawings. This theme covers the conventions associated with annotation and construction drawing.

INTRODUCTION TO MATERIALS:

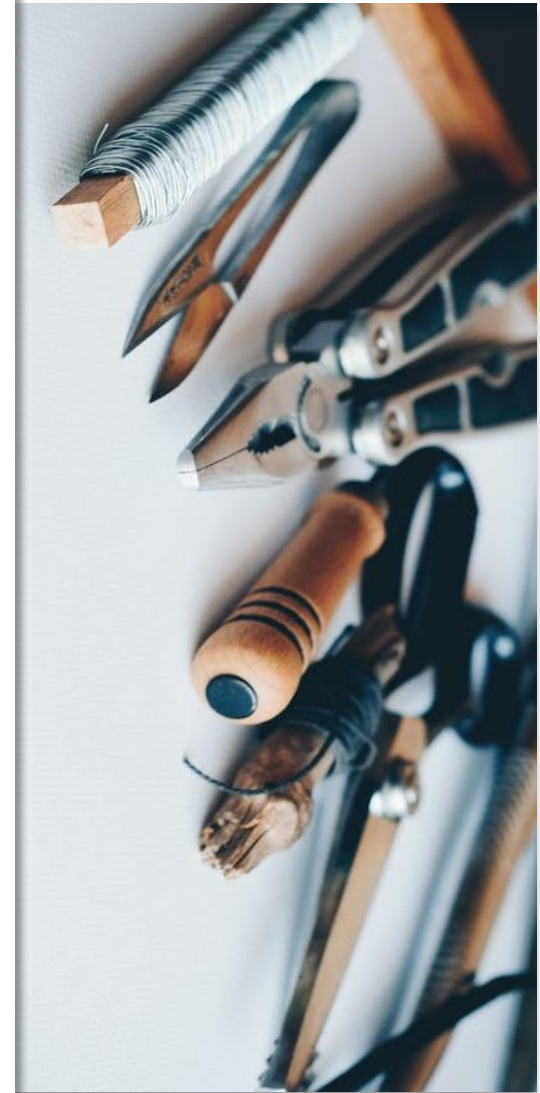
This theme is an insightful self-study theme of the processes and different materials used in construction. The theme covers concrete, wood, glass metals and plastics.

COSTING AND SPECIFICATION:

The crux of any project revolves around quantifying a project correctly. This section deals with the documentation and industry norms of costing in an example-based class. The course looks at how the professional landscape architecture realises costs and documents a project for tender. Accuracy in costing is the most crucial skill for installers and designers.

WATER FEATURES:

Water features are most likely the biggest consideration for most gardeners. It is important to be informed about the various aspects relating to water features in order to make sound design and maintenance decisions. This course discusses the important considerations of water features as well as swimming pools. We take a closer look at the reticulation systems and discharges available and introduce students to the construction considerations of water elements. This course theme is particularly supportive to students and homeowners considering an outdoor water feature or swimming pool.



Payment options:

Our online 50/50 courses are priced with your budget in mind and relates well to the price of other hobbies and courses. It is a very cost-effective way to study or invest in your passion or hobby as an enthusiast or entrepreneur. Our aim is to provide exceeding personal and career related value at an affordable price that is now available to anyone with internet access. Irene School of Garden Design has helped students learn all over South Africa and internationally. We have dedicated days during school terms only for our distance learning students and we only take in 14 distance learning students at a time. Our courses can be paid for up front or with the easy 3 payment plan including a small admin fee.

**DESIGN COURSE:
UPFRONT
R17749**

via eft

**DESIGN COURSE:
EASY 3 PAYMENTS
3 X R6149**

Deposit: R6149.00
THEREAFTER 2 PAYMENTS OF:
R6149.00 via eft
(R232.66 admin fee per payment)
60 days, 120 days after deposit

**TECHNICAL COURSE:
UPFRONT
R17749**

via eft

**TECHNICAL COURSE:
EASY 3 PAYMENTS
3 X R6149**

Deposit: R6149.00
THEREAFTER 2 PAYMENTS OF:
R6149.00 via eft
(R232.66 admin fee per payment)
60 days, 120 days after deposit

Sign up for both courses:

**COMPLETE COURSE / DESIGN & TECHNICAL
10% DISCOUNT
UPFRONT
R31949**

**COMPLETE COURSE / DESIGN & TECHNICAL
10% DISCOUNT
EASY 3 PAYMENTS
3 X R10749**

Deposit: R10749.00
THEREAFTER 2 PAYMENTS OF:
R10749.00 via eft
(R100 admin fee per payment)
90 days, 180 days after deposit

Distance learning option start at any time

ADDITIONAL INFORMATION:

All course notes are provided digitally only. Notes can be viewed from your computer or phone and can be downloaded on your portable drive or device. Students must use their own electronic equipment such as laptops or computers reliable internet access. We have made most of our material digital and provide most handbooks digitally to make our courses as cost effective as possible. Notes may be printed at your own cost. Stationery, travel, data and/or computer programs are not included. Please read our accreditation information section for more information. (International students can contact us via our hotline but please note we use WhatsApp calling for returning calls internationally. Please contact us should you need a swift key for international payments)

Irene School of
Garden Design

Designing gardens for life...

Est 2001



1 info@gardendesignschool.co.za
2 study@gardendesignschool.co.za
www.gardendesignschool.co.za



+27 12 751 0808
+27 82 322 2252

